

HAVAL



THE NEXT GENERATION **H6**.
A **SYMPHONY** OF MOMENTS.

INNOVATION THAT INSPIRES.

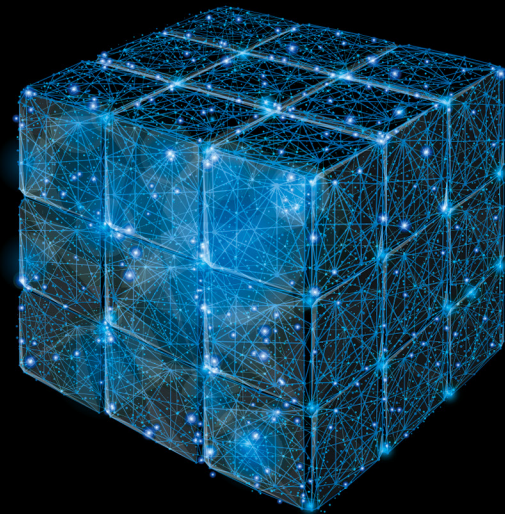
Global High-Intelligent Modular Technology Platform

The new generation Haval H6 is built using a Global High-Intelligent Modular Technology Platform. What that means for you and your family is a smarter, safer, more versatile and connected driving experience. This compelling evolution of technology, with its lightweight design, gives you advanced power, more comfort, reduced NVH (noise, vibration, and harshness) and lower fuel consumption.



High extensibility, endless possibilities

Elevate your travel experience with the Haval H6's diverse power adaptation capabilities. The high extensibility means that you have a selection of power modes, powertrain solutions and transmissions.



The ultimate lightweight performance

The Haval H6 is significantly lighter than the previous model, giving you a 14.5% increase in fuel efficiency, making it the perfect SUV for those family adventures.



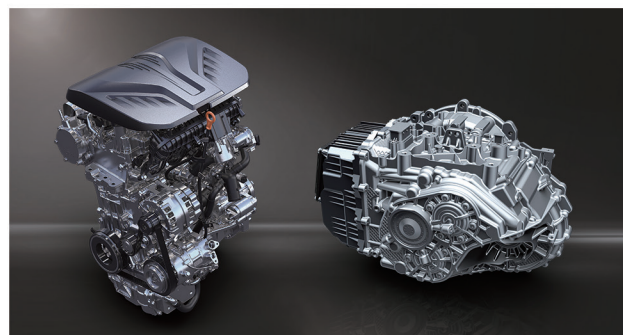
A seamless performance, in every direction

The evolution and modernization of the Haval H6 performance offers your refined versatility, no matter the adventure. Sporting over 6 million kilometres of rigorous road tests. 18 kinds of global environmental applications ensure true adaptability and excellent responsiveness for a more extraordinary drive.



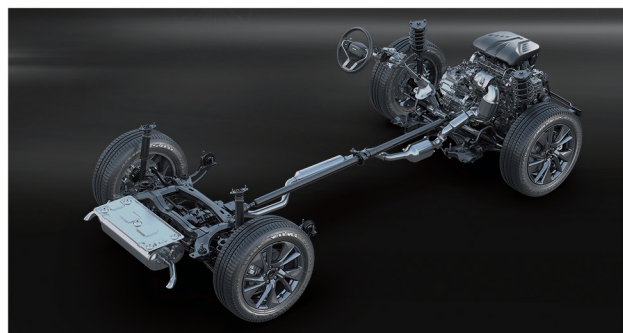


THE ART OF FAMILY MOMENTS



2.0GDIT Gasoline

7DCT



Front Macpherson rear multi-link independent suspension + AWD

The finest SUV performance technology.

Beyond its luxuriously good looks, the refined Haval H6 boasts a powerful 2.0 GDIT engine with a series of advanced innovations such as a Miller cycle, electronic water pump, 12:1 high compression ratio, and a thermal efficiency of up to 38%. All of which reduces fuel consumption and emissions but still delivers remarkable performance.

The mighty 2.0L engine delivers a power output of 150kW, between 6,000 - 6,300 r/min, and a peak torque of 320Nm, between 1,500 - 4,000 r/min.

The intelligent AWD system transforms your driving experience with a seamless transient response and torque distribution, allowing the front and rear axles to operate at a 50/50 ratio.

The H6 features All-terrain management which allows for maximum traction & stability in tougher driving conditions and in different terrains.



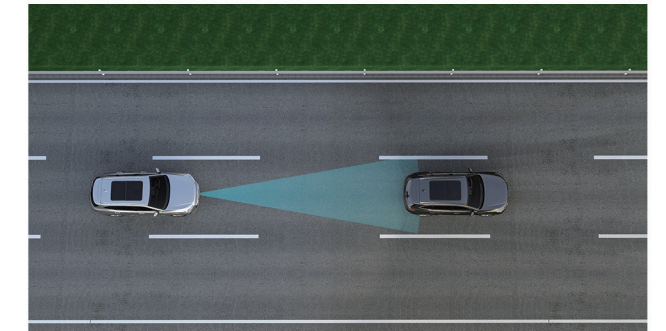


A NEW GENERATION OF REFINEMENT



Intelligent mobility.

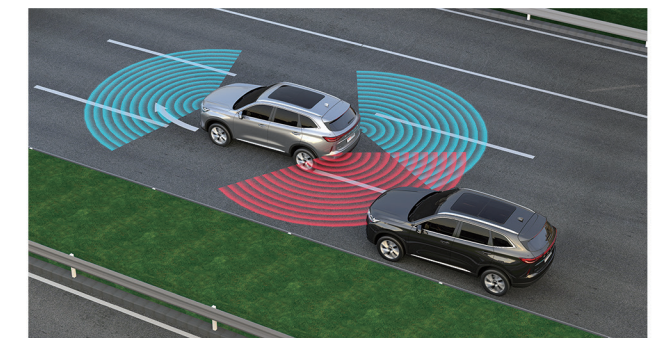
Every detail of the Haval H6 has been crafted to be responsive and efficient, giving you extra peace of mind. Boasting Level 2 advanced automatic driver assistance like Traffic Sign Recognition (TSR), Lane-Keeping Assist, Adaptive Cruise Control and more.



ACC (Adaptive Cruise Control) + ICA (Intelligent Cruise Assistance)
+ TAJ (Traffic Jam Assistance)



TSR (Traffic Signal Recognition)



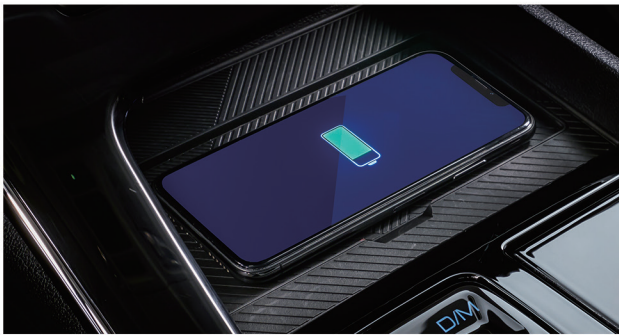
LKA (Lane-Keeping Assist)

Be connected and in control.

At the heart of the Haval H6 is a tech-savvy infotainment system that turns any task into a small tap on a screen. No matter where the journey takes you, stay connected to the outside world with a convenient wireless smartphone charger, CarPlay and Android Auto.



Carplay & Android auto



Wireless Charge



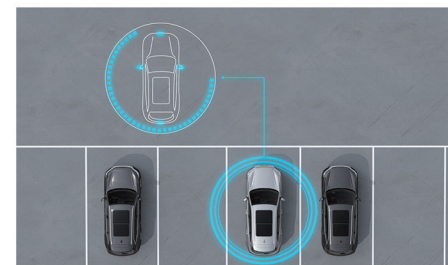
SOPHISTICATED SAFETY INNOVATION BUILT AROUND YOU



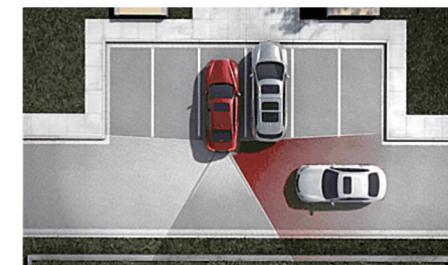


Premium peace-of-mind.

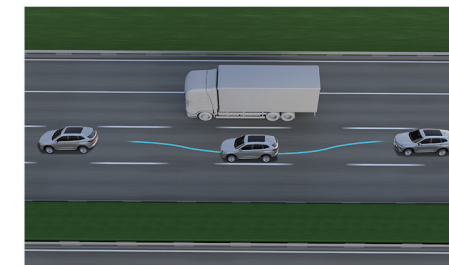
The Haval H6 boasts an intelligent suite of safety features, so you can spend more time enjoying the journey. Cruise with confidence on any journey with Autonomous Emergency Braking, Adaptive Cruise Control, Lane-Keep Assist and Rear Cross-Traffic Alert.



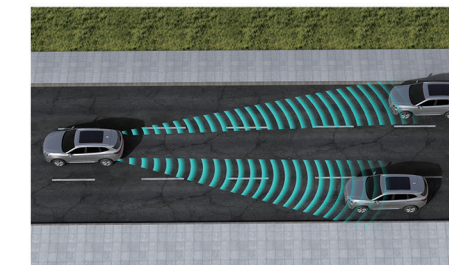
360° AVM (Around View Monitor System)



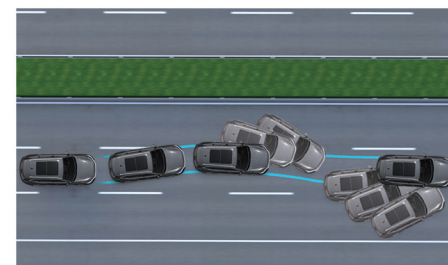
Rear Cross Traffic Alert



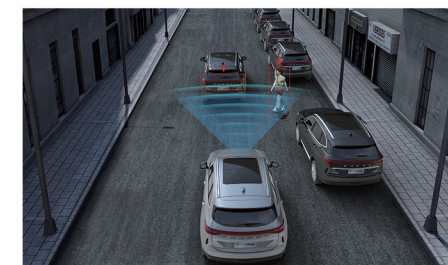
Smart Collision Avoidance



Lane Change Assist



Electronic Stability Program (ESP)



Autonomous Emergency Braking (AEB)



6 Omni-directional Airbags



71.61% High-strength Steel Body



ENGINEERED TO MOVE YOU

Signature sophistication.

Inspired by a fusion design of Asian and European influences, every design detail has been fine-tuned and crafted with a purpose and sense of sophisticated elegance.



A fusion design of Asian and European influences



Fangsheng Pattern Grille (Double Auspice Pattern)



Classic Body Waist Line



Vivid Body Proportion



Rising Flame LED Headlamp



Horizon Rear LED Taillight



19-inch Vortex Wheel Hub



18-inch Astrolabe Wheel Hub





TAILORED FOR ANY MOMENT



Luxury craftsmanship. Redefined.

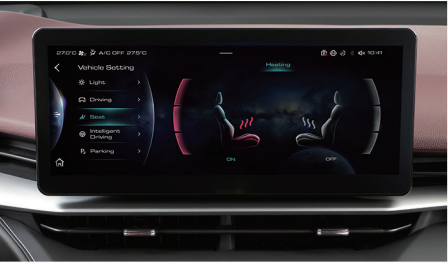
From the power-adjustable, heated front seats beneath the spectacular panoramic sunroof, it's impossible to deny that the Haval H6 offers unparalleled comfort to both drivers and passengers.



10 Speaker Sound System



10.25-inch Virtual Instrument



12.3-inch Ultra-smart Touch Screen



High Gloss Electroplating Rotary Shift



Front Seat Heating



Auto Lift Tailgate



Panoramic Sunroof



Driver 6 Way Power Adjustable Seat with 2 Way Power Adjustable Lumbar Support

Body Colours



1.Ayers Grey

2.Red

3.Hamilton White

4.Messiah Brown

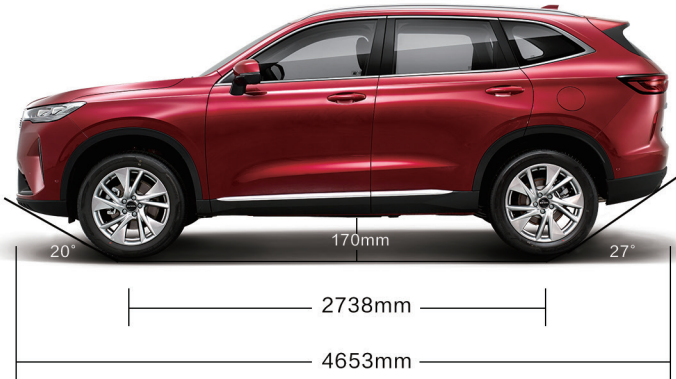
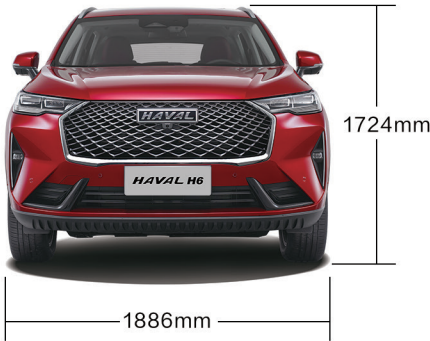
5.Green

6.Atlantis Blue

7.Black

*Black interior will be standard for all models, all other interior colours are optional and will have a 3-4 month waiting period.

Body Size



Source: Internal test data of Great Wall Mo

The minimum ground clearance, approach angle and departure angle are the quiescent values under technical conditions.

Wheel Types



18-inch astrolabe wheel hub



19-inch vortex wheel hub

Engine	2.0 Turbo			
Maximum Power (kW/rpm)	150/6000-6300			
Maximum Torque (kW/rpm)	320/1500-4000			
Overall Dimensions- Length X Width X Height (mm)	4653 X 1886 X 1724			
Ground Clearance	170mm			
Transmission	7DCT			
Drivetrain	2WD		4WD	
Grade	Premium	Luxury	Luxury	Super Luxury
Steering And Driving Dynamics				
Electronic Parking Brake (EPB)	•	•	•	•
Auto Hold	•	•	•	•
Smart Start-Stop	•	•	•	•
Tilt & Telescopic Steering	•	•	•	•
Front Mcpherson & Rear Multi-Link Suspension	•	•	•	•
Driving Mode (Standard, Eco, Sport, Snow)	•	•	×	×
Driving & Terrain Modes (Standard, Eco, Sport, Snow & Sand, Offroad)	×	×	•	•
Torque On Demand (TOD) AWD System	×	×	•	•
Dynamic Steering Modes (Sport, Comfort, Light)	•	•	•	•
Speed Sensitive Electric Steering	•	•	•	•
Cruise Control	•	×	×	×
Exterior Specification				
225/60 R18 Alloy Wheels	•	•	•	×
225/55 R19 Alloy Wheels	×	×	×	•
Auto Lift Tailgate	×	×	×	•
Panoramic Sunroof	×	•	•	•
Roof Rails	×	•	•	•
Interior Specification				
Rain-Sensing Wipers	•	•	•	•
Wireless Charger	×	×	×	•
Artificial Leather Steering Wheel	•	•	•	•
Keyless Entry & Push Button Start	•	•	•	•
Heated Front Seats	×	×	×	•
Vanity Mirrors (Driver and Passenger)	•	•	•	•

Transmission	7DCT			
Drivetrain	2WD		4WD	
Grade	Premium	Luxury	Luxury	Super Luxury
Vanity Mirrors (Driver and Passenger)	•	•	•	•
Paddle Shift	•	•	•	•
Front 12V Power Outlet	•	•	•	•
Rear Luggage 12V Power Outlet	×	×	×	•
Dashcam Power Outlet	×	•	•	•
10.25 Inch Colour Combination Instrument	•	•	•	•
Driver Seat 6-Way Electric Adjust	•	•	•	•
Driver Lumbar Support 2-Way Electric Adjust	×	×	×	•
Passenger Seat 4-Way Electronic Adjust	×	×	×	•
Passenger Seat 4-Way Manual Adjust	•	•	•	×
Driver Lumbar Support 2-Way Electric Adjust	×	×	×	•
60:40 Split with Folding Rear Seats	•	•	•	•
Safety and Security				
6 Airbags: Dual + Side + Curtain Airbags	•	•	•	•
Child Safety Lock & Isofix	•	•	•	•
Electronic Stability System (ESC) & Traction Control (TCS)	•	•	•	•
Anti-Roll System (RMI) + Secondary Collision Mitigation (SCM)	•	•	•	•
Cornering Brake Control (CBC) & Brake Assist (BA)	•	•	•	•
Hill Descent (HDC) & Uphill Assist (HHC)	•	•	•	•
Tyre Pressure Monitoring System (TPMS)	•	•	•	•
Front Parking Sensors (2)	×	•	•	•
Rear Parking Sensors (4)	•	•	•	•
Reverse Camera with Guidelines	•	×	×	×
360 Degree Camera with Panoramic View	×	•	•	•
Adaptive Cruise Control (ACC) with Intelligent Cruise, Intelligent Cornering & Traffic Jam Assist	×	•	•	•
Pre-Collision Warning & Automatic Emergency Braking (AEB Pedestrian and Cyclist)	×	•	•	•
Lane Departure Alert (LDA), Lane Keeping Assist (LKA) and Lane Centre Keeping (LCK)	×	•	•	•
Traffic Sign Recognition (TSR)	×	•	•	•
Blind Spot Detection with Rear Cross Traffic Alert and Lane Change Assist	×	×	×	•

Head-Up Display	×	×	×	•
Driver Fatigue Alert	•	•	•	•
Transmission	7DCT			
Drivetrain	2WD		4WD	
Grade	Premium	Luxury	Luxury	Super Luxury
Anti-Theft Alarm System	•	•	•	•
Infotainment				
Radio With FM/AM	•	•	•	•
10.25" Colour Multi-Touch Screen	•	×	×	×
12.3" Colour Multi-Touch Screen	×	•	•	•
Front & Rear Dual USB Ports	•	•	•	•
Bluetooth Connectivity	•	•	•	•
6 Speaker: 2 Treble, 2 Bass & 2 Full Range	•	•	•	×
8 Speaker: 4 Treble & 4 Bass	×	×	×	•
Speed Sensitive Volume Control	•	•	•	•
Carplay & Android Auto	•	•	•	•
Glass And Mirrors				
Green Glass	•	•	•	×
Rear Privacy Glass	×	×	×	•
Manual Anti-Glare Mirrors	•	×	×	×
Electronic Anti-Glare Inside Mirrors	×	•	•	•
Driver's Window One Touch Up/Down	•	×	×	×
All Windows One Touch Up/Down	×	•	•	•
Heated Exterior Mirrors	×	×	×	•
Electrically Adjustable Exterior Mirrors	•	•	•	•
Electrically Retractable Exterior Mirrors	×	•	•	•
Lighting				
LED Headlights & Taillamps	•	•	•	•
Electric Height-Adjusting Headlights	•	•	•	•
Automatic Headlights + Follow Me Home	•	•	•	•
Front Fog Lamp (LED)	•	•	•	•
Rear Fog Lamp (LED)	•	•	•	•

Daytime Running Lamps (LED Integrated)	•	•	•	•
Air Conditioner				
Single Zone Aircon	•	×	×	×
Automatic Dual Zone Aircon	×	•	•	•
Rear Aircon Vents	•	•	•	•
<div><div><div>• Standard</div><div>X Not Available</div></div><div>Great Wall Motor Company Limited</div><div>For more details, please visit: www.haval.co.za This brochure is for reference only and should be subject to the actual products available in the local dealer. Every effort has been made to ensure that the content of this brochure is correct at the time of going to print. HAVAL reserves the right to change the specification and the vehicles described and shown in this brochure at any time.Please check with your local HAVAL Dealer to receive the most up-to-date information.</div></div>				





For more details, please go to www.gwmfiji.com

Visuals used for illustrative purposes only. Specifications may vary from model to model.